

# HORSTMAN HDC-5 CLUTCH

To place an ORDER  
**1-513-539-9900**

## HORSTMAN HDC-5 A MAJOR BREAKTHROUGH IN 2-CYCLE DRY CLUTCH TECHNOLOGY

The dry clutch is the ultimate for sportsman classes. Small diameter and lightweight, it reduces inertia for better performance. Features easy adjustment of the stall speed without removal of the clutch from engine. Components are made from the best quality billet alloys.

**HDC-5** is the next wave of winning clutches. **HDC-5** at 2 1/2" provides superior performance by lowering rotational inertia up to 30%. Fact: Controlled horsepower engines benefit significantly from lower inertia driveline components.

Part No.	Description	Racer Net
*HDC5a	HDC-5 Complete Clutch 1-disc	\$ 321.00
*HDC5b	HDC-5 Complete Clutch 2-disc	331.95
*HDC5cp	HDC-5 Complete Clutch 3-disc (pipe)	360.00
*HDC5cs	HDC-5 Complete Clutch 3-disc (can)	360.00

\* **NOTE: Specify number of teeth and chain when ordering!!!!**

### HDC-5a & HDC-5b Drums

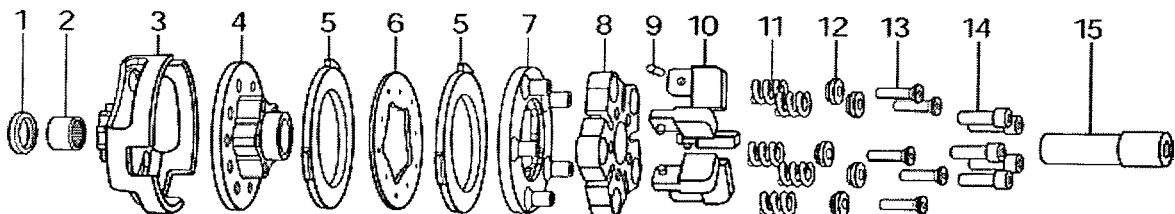
Part No.	Description	Racer Net
H336065a	Aluminum drum 1 disc (less sprocket)	\$ 42.43
H336065s	Steel drum 1 disc (less sprocket)	44.55
H336066a	Aluminum drum 2 disc (less sprocket)	46.66
H336066s	Steel drum 2 disc (less sprocket)	46.66



### HDC-5a & HDC-5b Sprockets

Part No.	Description	Racer
H330133	10T- 219 New bushing style	\$ 39.78
H330138	11T- 219 sprocket (bolt on)	39.39
H330139	12T- 219 sprocket (bolt on)	41.17
H330140	13T- 219 sprocket (bolt on)	45.69
H330141	15T- 219 sprocket (bolt on)	47.26

## HORSTMAN HDC-CLUTCH PARTS LIST



PRICES SUBJECT TO CHANGE WITHOUT NOTICE

# HORSTMAN HDC-5 CLUTCH

To place an ORDER  
**1-513-539-9900**

## HDC-5 PARTS LIST

REF#	Part No.	Description	RacerNet
1	<b>H322300</b>	Spacer, .145" wide x .670" O.D. Use with 10T- 219	\$ 5.78
	<b>H323800</b>	Spacer, .145" wide x .740" O.D. Use with 11T-219, 9T-35	5.76
	<b>H325900</b>	Spacer, .145" wide x .830" O.D. Use with 12T, 13T, 15T-219	6.02
2	<b>H330132</b>	Bushing graphited fits 10T - 219	
	<b>H330400</b>	Bearing, fit 10T-219 & sprocket	16.77
	<b>H300300</b>	Bushing, fit 9T-35, 11T-219 sprocket	7.36
	<b>H300400</b>	Bearing, fit 12T-219 sprocket	11.01
3		SEE PREVIOUS PAGE	
4	<b>H336020</b>	Drive hub, HDC-5 one disc-HDC-5a	81.10
	<b>H336025</b>	Drive hub, HDC-5 two disc-HDC-5b	85.11
5	<b>KM4903</b>	Friction Disc-HDC-3-4	20.95
	<b>H336023</b>	Friction disc ceremetalic standard-HDC-5	33.95
6	<b>H336027</b>	Floater, .095" standard- HDC-5b	22.92
	<b>H336028</b>	Floater, .100" optional- HDC-5b	22.92
	<b>H336029</b>	Floater, .105" optional -HDC-5b	22.92
7	<b>H333328</b>	Pressure plate--HDC-3-4	101.26
	<b>H336021</b>	Pressure plate-HDC-5	73.50
8	<b>H330026</b>	Lever support-HDC-3-4	80.86
	<b>H336022</b>	Lever support-HDC-5	47.28
9	<b>H330027</b>	Dowel Pin	1.28
10	<b>H330043</b>	T-slot lever 10.5 grams .245" top width-HDC-3-4	12.34
	<b>H336036</b>	Lever 12.2 grams- HDC-5	12.03
	<b>H326600</b>	Coned washer-HDC-3-4	6.04
	<b>H326700</b>	Jam nut-HDC-3-4	9.33
	<b>H330031</b>	Spring adjuster--HDC-3-4	6.04
11	<b>H313000</b>	Spring, .091" wire dia. comes standard in clutch-HDC-3-4	5.26
	<b>H328200</b>	Spring, .085" wire dia.-HDC-3-4	5.55
	<b>H3282Y</b>	Spring, .085" wire (matched set of 5)-HDC-5a	21.33
	<b>H3130Y</b>	Spring, .091" wire (matched set of 5)-HDC-5b	24.07
13	<b>H334800</b>	Screw 10/32 flat head- HDC-5	1.96
14	<b>H336038</b>	Screw 10/32 x 3/4 socket head- HDC-5	1.02
15	<b>H703600</b>	Starter nut	24.91
	<b>H309300</b>	Woodruff key	1.50
	<b>H336062</b>	Spanner wrench- HDC-5	21.95
	<b>H330036</b>	Spanner wrench "color green"-HDC-3-4	26.76
	<b>H336061</b>	Puller-HDC-5	21.95
	<b>H304400</b>	Clutch puller-HDC-3-4	16.29

PRICES SUBJECT TO CHANGE WITHOUT NOTICE

# PATRIOT 2 ENGINE CLUTCH

To place an ORDER

**1-513-539-9900**

**All-New Patriot two cycle engine clutch! The Patriot 2 is a two disk clutch for the Yamaha KT100! The Patriot brand features high quality steel and aluminum alloys, heat treated or anodized precision machined components!!**

## Patriot Clutch Features -

- Six spring, six lever design provides for increased, uniformed clamping pressure and smooth symmetrical lockup
- High strength alloy steel inner hub resists deflection for a more consistent clutch through the whole run
- Six slot drum for DOUBLE drum life
- Triangle shape sprocket drive transfers torque instead of relying just on the sprocket bolts
- Lightweight heat treated alloy steel drum
- Consistent air gap completely around the clutch is achieved with precision ground parts
- Precision machined and hardened alloy steel starter nut and clutch spacer
- Matched springs



## PATRIOT 2 CLUTCH & PARTS LIST

Part Number	Description	RacerNet
P-0001	Two disk, six springs drive hub	\$ 75.00
P-0002	Six spring lever plate	39.00
P-0003	Six spring pressure plate	73.00
P-0004	Floater .090	19.60
P-0005	Floater .095	19.60
P-0006	Floater .100	19.60
P-0007	Floater .105	19.60
P-0008	Drum only, two disk	41.25
P-0009	10t #219 sprocket only w/bolts	38.00
P-0010	11t #219 sprocket only w/bolts	38.00
P-0011	Starter nut	19.00
P-0012	Friction Disk	28.00
P-0013	Spring Cap	1.40
P-0014	Spring .085	3.80
P-0015	Spring .091	3.80
P-0016	10t #219 sprocket/drum assembly, two disk	60.00
P-0017	11t #219 sprocket/drum assembly, two disk	60.00
P-0018	Drum spacer .135" for 10t drum	3.80
P-0019	Drum spacer .145 for 11t drum	3.80
P-0020	Lever weight	9.80
P-0021	Lever weight pin	.95
P-0022	Adjuster spring flathead bolt	.55
P-0023	Clutch center socket head bolt	.35
P-0024	Six spring spanner wrench	18.75
P-0025	Steel clutch puller	18.75
P-0026	Patriot 2 Clutch with 10t #219	299.00
P-0027	Patriot 2 Clutch with 11t #219	299.00

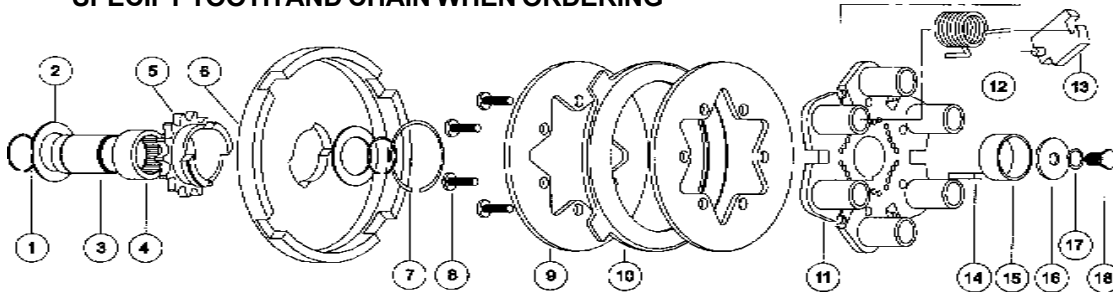
# SMC VORTEX CLUTCH

To place an ORDER  
**1-513-539-9900**

## SMC VORTEX GOLD CLUTCH

The VORTEX GOLD is a disc clutch designed for kart racing. It is intended for Stock 4-stroke engines.

Part No.	Description	Racer Net
*SMC4101	Complete Clutch-Gold 1 Disc	\$ 219.95
*SMC4102	Complete Clutch-Gold 2 Disc	249.95
* SPECIFY TOOTH AND CHAIN WHEN ORDERING		



FIG#	Part No.	Description	Racer Net
1	SMC4013	Retaining Ring, Inner Race (2)	\$ 1.60
2	SMC4010	Washer (2) (0.080 thick)	2.00
	SMC4023	1.187 O.D. Washer (0.020 thick) Fits #35-12T, 13T and #219-16T sprkts	2.00
3	SMC4011	Inner Race (1.187 length)	10.80
4	SMC4012	Needle Roller Bearing	7.20
5	SMC4611	11T Sprocket-35 chain	22.18
	SMC4040	11T Sprocket/Bronze Bushing Assembly	35.95
	SMC4612	12T Sprocket & Bushing-35 chain	22.18
	SMC4613	13T Sprocket & Bushing-35 chain	22.18
	SMC4614	14T Sprocket & Needle Roller Bearing-35 chain	22.18
	SMC4615	15T Sprocket & Needle Roller Bearing-35 chain	22.18
	SMC4616	16T Sprocket & Needle Roller Bearing-35 chain	22.18
	SMC4716	16T Sprocket & Bushing-219 chain	22.18
	SMC4717	17T Sprocket & Needle Roller Bearing-219 chain	22.18
	SMC4718	18T Sprocket & Needle Roller Bearing-219 chain	22.18
	SMC4719	19T Sprocket & Needle Roller Bearing-219 chain	22.18
	SMC4720	20T Sprocket & Needle Roller Bearing-219 chain	22.18
6	SMC4721	21T Sprocket & Needle Roller Bearing-219 chain	22.18
	SMC4007	Drum (1 disc)	34.72
7	SMC4033	Drum (2 disc)	34.72
8	SMC4009	Retaining Ring, Sprocket	1.60
9	SMC4006	Button Head Cap Screw (6)	.40
10	SMC4003	Drive Plate (2)	17.92
11	SMC4002	Clutch Disc (1)	27.44
	SMC4001	Drive Hub (1 disc)	106.40
12	SMC4031	Drive Hub (2 disc)	109.76
13	SMC4004	VORTEX Spring (6)	3.60
14	SMC4005	Weight (6)	9.00
15	SMC4014	Key	1.00
	SMC4015	Spacer (0.500 length) (1 disc)	4.80
16	SMC4032	Spacer (.0250 length) (2 disc)	4.80
17	SMC4016	Crankshaft Washer	1.00
18	SMC4025	Grade 8 Lock Washer	.40
	SMC4017	Hex Head Cap Screw	1.20
	SMC4018	VORTEX Spring Wrench	18.00
	SMC4021	1 Disc Rebuild Kit (Two Drive Plates, One Clutch Disc, Six Cap Screws)	61.60
	SMC4034	2 Disc Rebuild Kit (Three Drive Plates, Two Clutch Disc, Six Cap Screws)	106.40

PRICES SUBJECT TO CHANGE WITHOUT NOTICE

# SMC CLUTCH

To place an ORDER

**1-513-539-9900**

## SMC BULLET CLUTCH

Part No.	Description	Racer Net
*SMC4802	Complete Clutch-Bullet 2 Disc	\$249.95



\* SPECIFY TOOTH AND CHAIN WHEN ORDERING

FIG#	Part No.	Description	Racer Net
1	SMC4013	Retaining Ring, Inner Race (2)	\$ 1.60
2	SMC4010	Washer (2) (0.080 thick)	2.00
	SMC4023	1.187 O.D. Washer (0.020 thick) Fits #35-12T, 13T and #219-16T sprkts	2.00
3	SMC4011	Inner Race (1.187 length)	10.80
4	SMC4012	Needle Roller Bearing	7.20
	SMC4020	Bushing	5.60
5	SMC4611	11T Sprocket -35 chain	22.18
	SMC4040	11T Sprocket/Bronze Bushing Assembly	34.50
	SMC4612	12T Sprocket & Bushing-35 chain	22.18
	SMC4613	13T Sprocket & Bushing-35 chain	22.18
	SMC4614	14T Sprocket & Needle Roller Bearing-35 chain	22.18
	SMC4615	15T Sprocket & Needle Roller Bearing-35 chain	22.18
	SMC4616	16T Sprocket & Needle Roller Bearing-35 chain	22.18
	SMC4617	17T Sprocket & Needle Roller Bearing-35 chain	22.18
	SMC4618	18T Sprocket & Needle Roller Bearing-35 chain	22.18
	SMC4716	16T Sprocket & Bushing-219 chain	22.18
	SMC4717	17T Sprocket & Needle Roller Bearing-219 chain	22.18
	SMC4718	18T Sprocket & Needle Roller Bearing-219 chain	22.18
	SMC4719	19T Sprocket & Needle Roller Bearing-219 chain	22.18
	SMC4720	20T Sprocket & Needle Roller Bearing-219 chain	22.18
	SMC4721	21T Sprocket & Needle Roller Bearing-219 chain	22.18
6	SMC4811	Drum (1 disc)-8 -slots	37.80
	SMC4812	Drum (2 disc)-8-slots	37.80
7	SMC4037	Retaining Ring, Sprocket	4.72
8	SMC4006	Button Head Cap Screw (6)	.40
9	SMC4003	Drive Plate (2)	17.92
10	SMC4931	Clutch Disc (1) 8 tabs	29.68
11	SMC4841	Pressure Plate	26.25
12	SMC4828	Drive Hub (1 disc)	84.00
	SMC4829	Drive Hub (2 disc)	84.00
13	SMC4843	Lever (6)	7.84
14	SMC4847	Compression Spring (6)	3.00
15	SMC4853	Flange Nut	.40
16	SMC4014	Key (one disc clutch)	1.00
	SMC4036	Key (two disc clutch)	1.00
17	SMC4015	Spacer (one disc clutch) (0.500 length)	6.40
	SMC4032	Spacer (two disc clutch) (0.250 length)	6.40
18	SMC4016	Cranshaft Washer	1.00
19	SMC4025	Grade 8 lock washer	.40
20	SMC4017	Hex head cap screw	.80
21	SMC4860	Extra mass hardware set	3.60

# NORAM CLUTCHES

5HP RACING CLUTCH #35 CHAIN 3/4" SHAFT

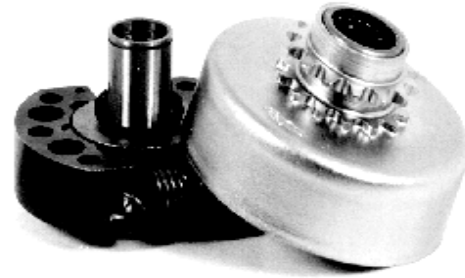
To place an ORDER

1-513-539-9900

## NORAM GE Series

## COMPLETE CLUTCHES

Part No.	No. of Teeth	Bearing type	Racer Net
NARC60	11	Oillite	\$72.95
NARC61	12	Oillite	67.95
NARC64	13	Needle	67.95
NARC66	14	Needle	67.95
NARC68	15	Needle	67.95
NARC70	16	Needle	67.95
NARC72	17	Needle	67.95
NARC74	18	Needle	67.95
NARC76	19	Needle	67.95



Sold with "Heat Treated Lite Shoes" & red springs

### REPLACEMENT DRUMS With Sprocket & Bearing

Part No.	No. of Teeth	Bearing type	Racer Net
NA11211	11	Oillite	\$ 36.95
NA04112B	12	Oillite	36.95
NA11713N	13	Needle	36.95
NA16514N	14	Needle	38.95
NA13215N	15	Needle	38.95
NA13416N	16	Needle	38.95
NA14917N	17	Needle	38.95
NA24618N	18	Needle	46.95

### REPLACEMENT PARTS

Part No.	Description	Racer Net
NA158	Lt. Wt. shoe "heat treated shoe"	\$10.97
NA159	Hvy. Wt. shoe "heat treated shoe"	10.97
NA138	Hub, 11T only	76.95
NA046	Hub, all clutches except 11T	29.95
NA0066	Interior fiber washer	1.18
NA081	Bushing for 12T clutch	7.95
NA036	Bushing for 11T clutch	7.95
NA015	Needle bearing for 13T-20T clutch	9.95
NA04	Snap ring	1.20
NA045	11T Steel washer	1.36
PL316K	Clutch Key	.25

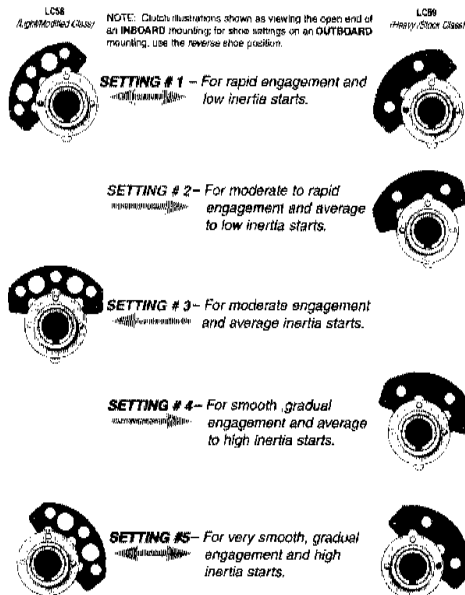
### SPRINGS

Racer Net

FOR "HEAT TREATED SHOES" (Both Hooks Up) \$ 2.75 each

Part No.	Color	Engagement w/light shoes	RPM w/heavy shoes
NA013	Brown	1800	1620
NA017	Black	2100	1900
NA020	Red	2500	2040
NA030	White	2900	2470
NA040	Blue	3200	2650
NA050	Purple	3600	2900
NA060	Green	4000	3200
NA079	Orange	4400	3500
NA086	Brown	4900	3850
NA088	Red	5500	4200

### NORAM SHOE SETTING OPTIONS



ABOVE ENGAGEMENT SETTINGS ARE PROVIDED FOR REFERENCE PURPOSES ONLY!

PRICES SUBJECT TO CHANGE WITHOUT NOTICE

# NORAM CLUTCHES

5HP RACING CLUTCH #35 CHAIN 3/4" SHAFT

To place an ORDER

1-513-539-9900

## NORAM ARENA SERIES CLUTCH

*Ideal for use in Indoor Racing or Short Track Racing!*

\* NOTE: CLUTCH MUST BE RUN "OUTBOARD" 3/4" Counterbore #35 Pitch Chain!

### COMPLETE CLUTCH

Sold with "Heat Treated Lite Shoes" & black springs

Part No.	No. of Teeth	Bearing type	Racer Net
NAAR09	9	Oillite	\$ 144.95
NAAR10	10	Needle	144.95
NAAR12	12	Needle	144.95

### REPLACEMENT PARTS

Part No.	Description	Racer Net
NAH400	Arena Clutch Hub	\$ 60.95
NASP01	Arena Clutch Spacer	12.95
NAW063	Fiber Washer	1.56
NAB009	Bushing 9T Clutch	7.95
NA018	Needle Bearing 10T & 11T Clutch	19.95
NA158	Lite "Heat Treated" Shoe	10.97
NA159	Heavy "Heat Treated" Shoe	10.97

### REPLACEMENT PARTS

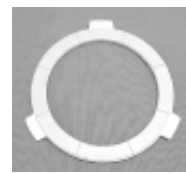
FOR REPLACEMENT SPRINGS-SEE RATECH GE CLUTCH SPRING SECTION

## 4-CYCLE CLUTCH LININGS

High quality aftermarket replacement clutch linings for Horstman



KMMDC7



KM815

Part No.	Description	Racer Net
KMMDC7	MDC replacement lining	\$ 27.95
KM815	G/L replacement lining	18.00

## REPLACEMENT SPROCKETS

Replacement sprockets for Buller, Vortex and Premier



Part No.	Description	Racer Net
KMBSJ12	Interchangeable sprocket-12	\$ 19.95
KMBSJ13	Interchangeable sprocket-13	19.95
KMBSJ14	Interchangeable sprocket-14	19.95
KMBSJ15	Interchangeable sprocket-15	19.95
KMBSJ16	Interchangeable sprocket-16	19.95
KMBSJ17	Interchangeable sprocket-17	19.95
KMBSJ18	Interchangeable sprocket-18	19.95

PRICES SUBJECT TO CHANGE WITHOUT NOTICE

# FUN KARTS CLUTCH

To place an ORDER

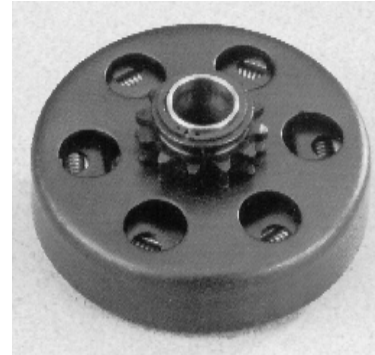
1-513-539-9900

## For "Fun" & "Backyard" Karts

Fit 5/8" & 3/4" Shafts. For #35 & #40/41  
Chain



Part No.	Description	Racer Net
MTSS1041	3/4" Shaft 10 Tooth #40/41 Chain	\$ 32.95
MTSS1041L	3/4" Shaft 10 Tooth #40/41 Chain (With Lube Fitting)	46.95
MTSS1258	5/8" Shaft 12 Tooth #35 Chain	32.95
MTSS1234	3/4" Shaft 12 Tooth #35 Chain	32.95
MTSS1334	3/4" Shaft 13 Tooth #35 Chain	32.95
MTSS0658	Replacement 5/8" Clutch Bushing	3.25
MTSS0634	Replacement 3/4" Clutch Bushing	3.25
PL316K	Clutch Key	.25
MTMXT97	Max Torque Converter Belt	30.95
MTMXT98	Max Torque Converter Belt	30.95



PRICES SUBJECT TO CHANGE WITHOUT NOTICE